



Cross Bore Awareness

GUCC Cross Bore Committee:
April Johnson & Danny Boswell

March 12, 2026



Agenda



Reduce Cross Bore Risk



01. Cross Bore Safety Impact

02. What is Cross Bore

03. Cross Bore Prevention

04. Public Awareness: Damage Prevention Ecosystem

Property Owners

Municipalities/Utility Owner

Sewer

Professionals/Plumbers/Jetting & Cleaners

Utility Installers

05. Emergency Response



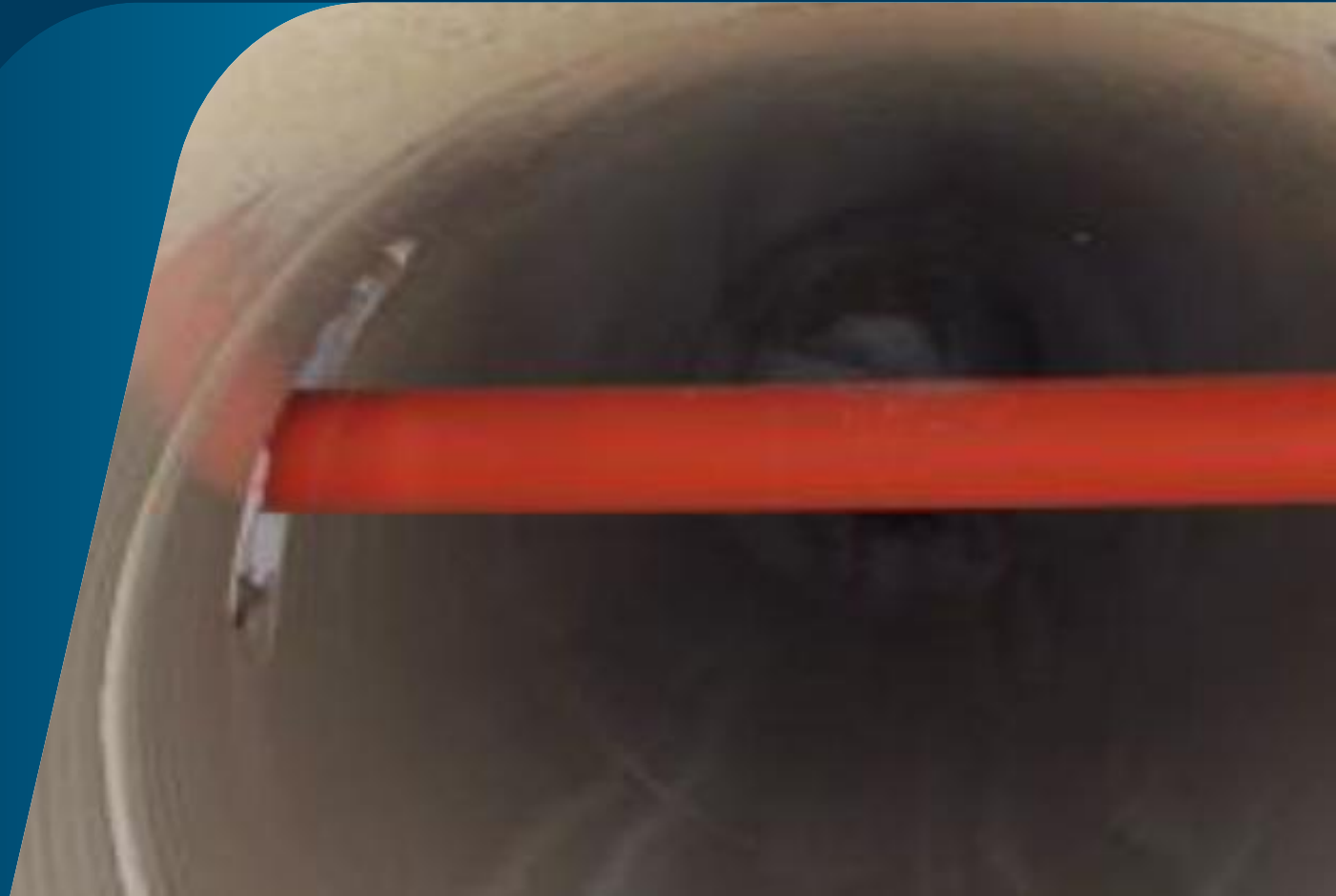
Cross-Bore Safety Impact



Cross-Bore Incident



What is a Cross Bore?



What is a Cross Bore?

What is a
CROSS BORE?



What is a Cross Bore?



Cross Bore Prevention



Evolution of Trenchless Excavation & Cross Bores

Most Common Cross Bore is Sewer

Based on information from the **North American Society of Trenchless Technology** field experience suggests that there are 2 to 3 cross bores per running mile of installed pipe



This information is based on all types of utilities.



Trenchless Excavation Tools & Methods



**Pneumatic
Piercing Tools**

01.



Plows

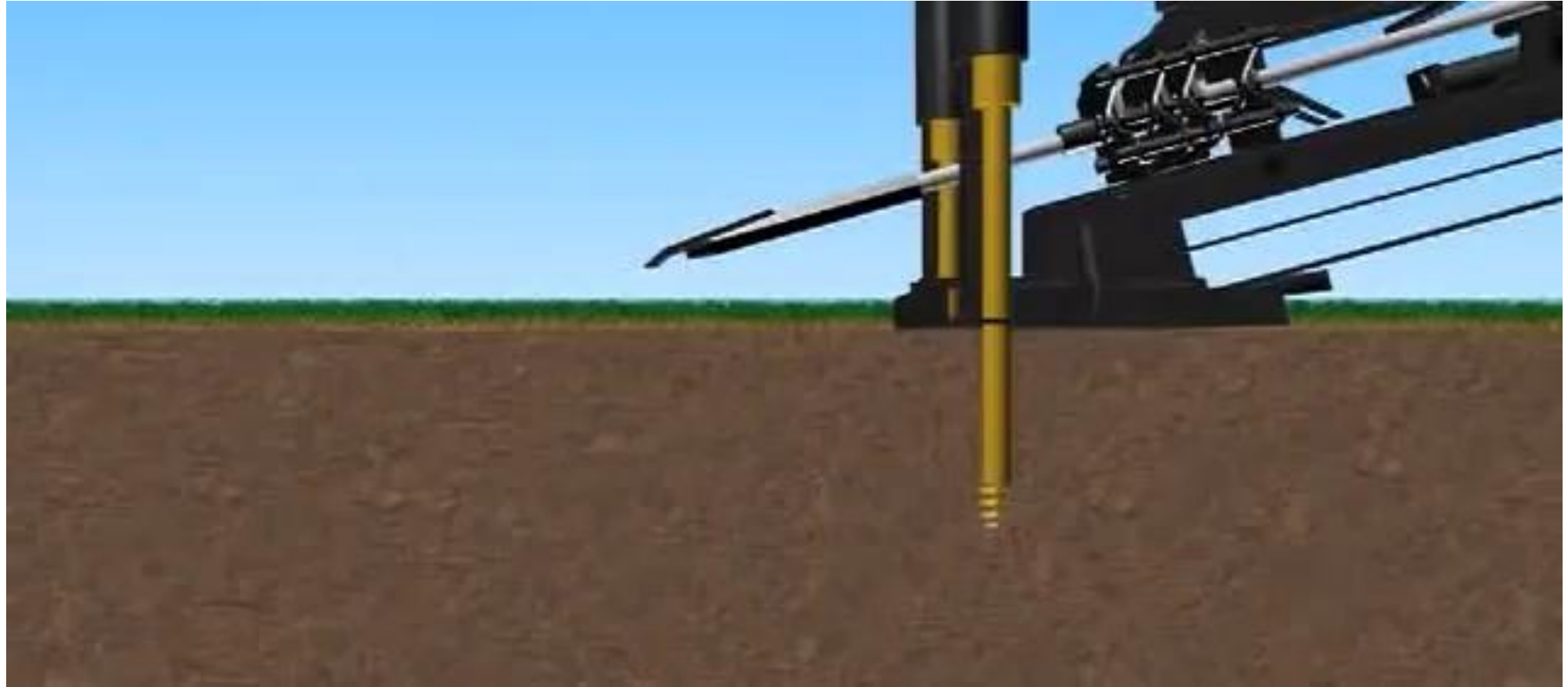
02.



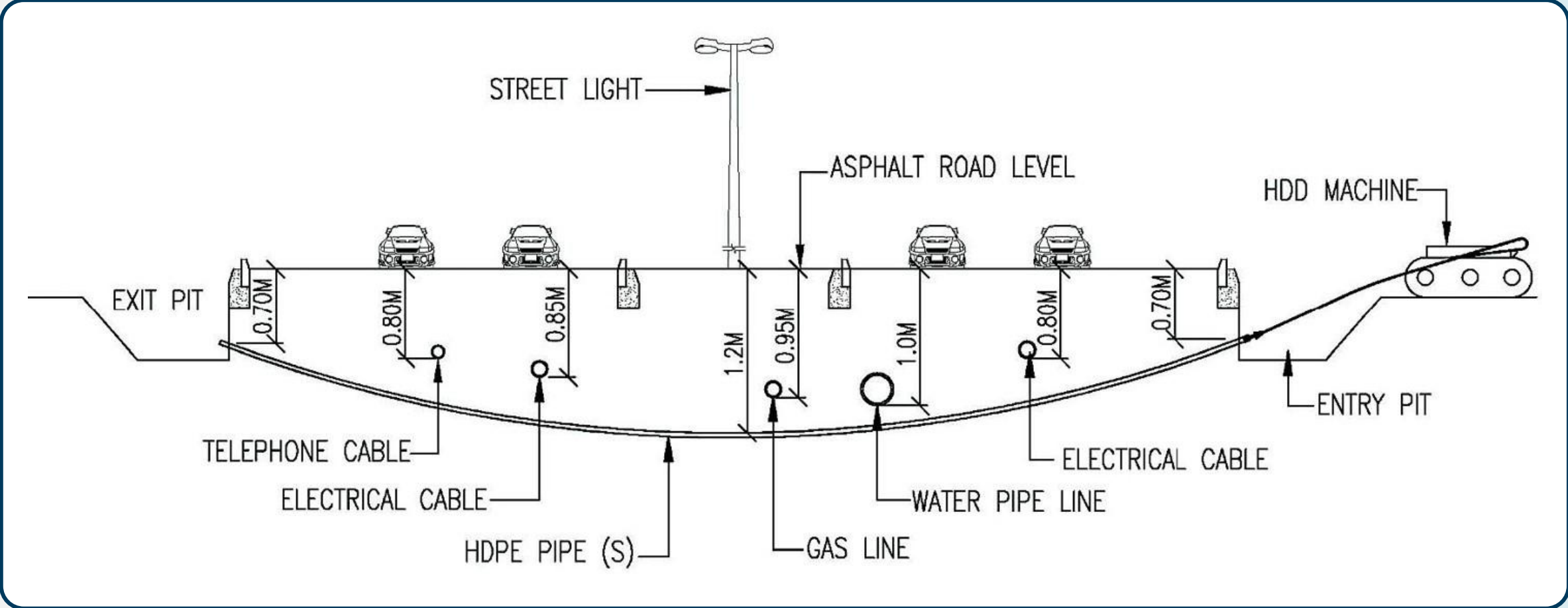
HDD

03.

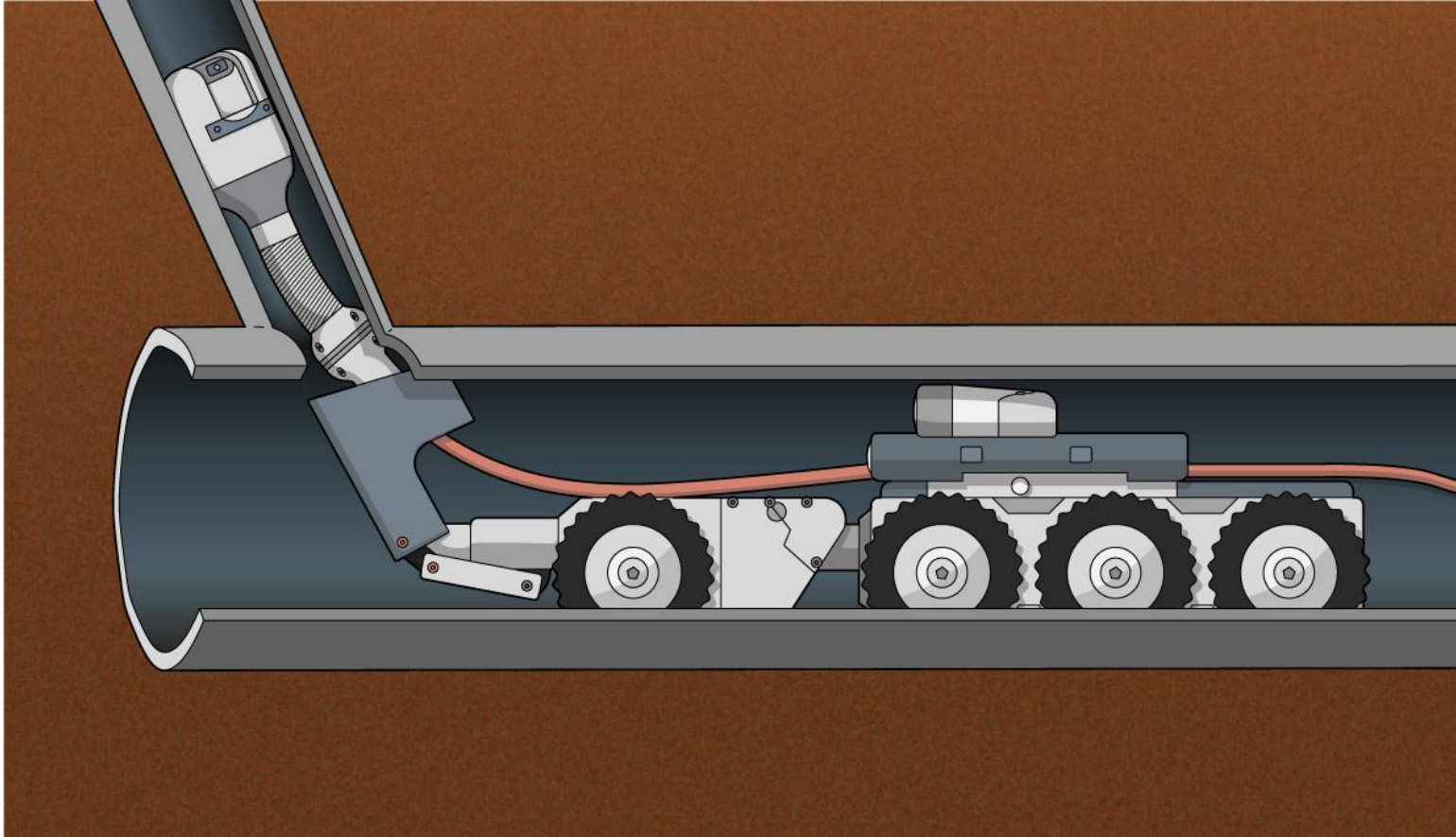
Horizontal Directional Drilling (HDD)



Numerous Underground "Conflicts"



Horizontal Directional Drilling (HDD)



Expose all Potential “Conflicts”



Public Awareness / Education



Why Do Cross Bores Occur?

01

Pre-2000s Replacement/Renewal projects

Directional drilling frequently used without sewer locating and in practices

02

Sewer Locates and Marking

- State One Call locate regulations have a gap related to the marking of sewer facilities
- Sewer laterals require additional investigation since they are often not marked; privately owned

03

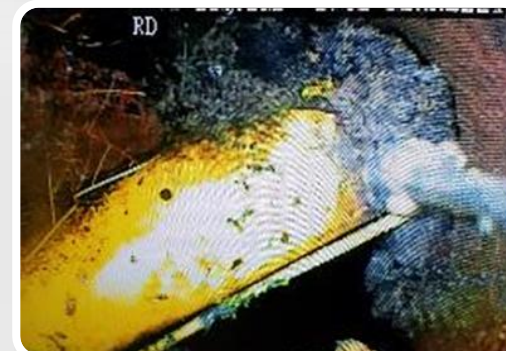
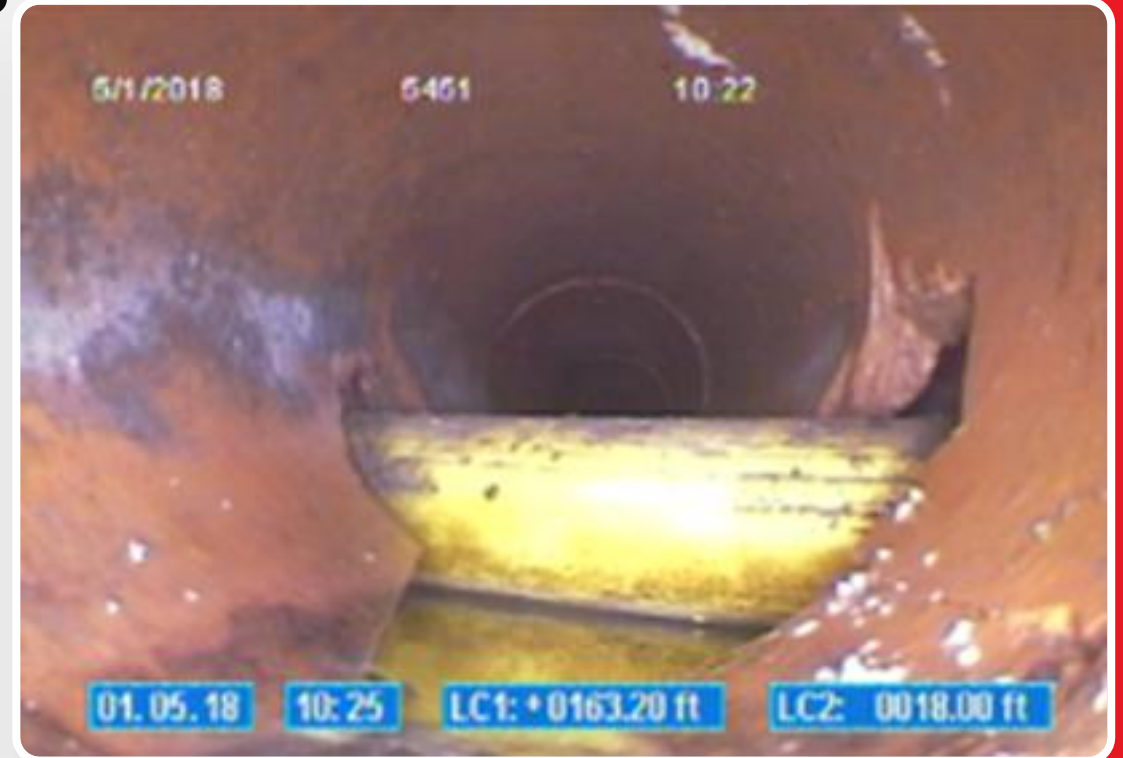
Hilly terrain

04

Older Cities

05

Shallow groundwater table



Anyone Who Cleans Sewers Is At Risk



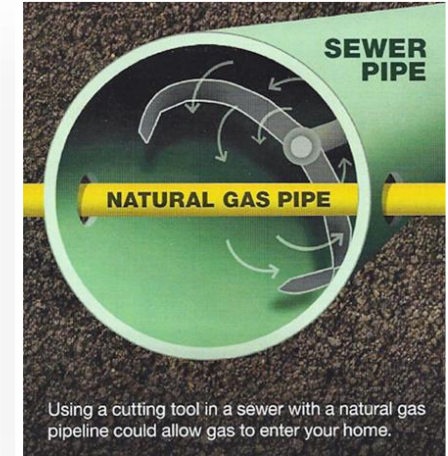
Target audiences for Cross bore education include:

- Homeowners
- Apartment Maintenance personnel
- Utility personnel
- Plumbers
- Sewer cleaning contractors



Mechanical Sewer Cleaning Equipment

- Easy to use
- Readily available
- No warning tags
- No training
- Can damage plastic gas piping



Safety Recommendations For Sewer Cleaners & Plumbers: Cleaning Equipment



Clear without a cutting tool:

Use minimally invasive equipment, such as a plumbing snake or water jet, to attempt to clear the blockage.



Feel for obstructions that do not seem to resemble tree roots or other common obstructions as the tool moves through the sewer line.



Safety for Property Owners



Always call 811 before any digging



Watch for signs of underground utility problems



Know that sewer laterals are often unmarked



Maintain good records for your property



Be aware of drain blockages



Allow crews access when requested



Ask for a camera inspection when moving into a home



Educate contractors working on your property



Watch for signs of underground utility problems



Encourage use of safe technology



Safety for Municipalities & Utility Owners

PROJECT PHASE	KEY INSTALLER ACTIONS	RISK REDUCED
Pre-Construction	811 One-Call, CCTV sewer inspections, potholing at crossings	Unknown sewer laterals and depth conflicts
Installation	Monitor bore path, stop on resistance, verify anomalies	Unintentional utility penetration during drilling
Post-Construction	CCTV verification, GIS documentation, tagging/locate cards	Undetected cross bores and future maintenance strikes
Ongoing	Crew training, coordination with sewer operators, QA/QC	Repeat incidents and systemic safety failures



Cross Bore Sewer Camera Inspection Program

CCTV

- Truck Mounted with lateral launch
- Video Documentation



Push Camera

- Can fit in small diameter
- Push from internal & external cleanouts



Excavation

- Inspection used when CB is not accessible with camera
- Visual observation between gas and sewer required
- Photo Documentation

Pics change out from previous slide format last version



Emergency Response



Cross Bore Emergency Management Overview



Emergency Response Guidelines



All reported cross bores → Emergency Response

- An FSR will go to investigate.
- This includes a site investigation, locates check, documentation check
- Perform initial leak investigation

If confirmed, it must be repaired immediately.






Reasons for this policy

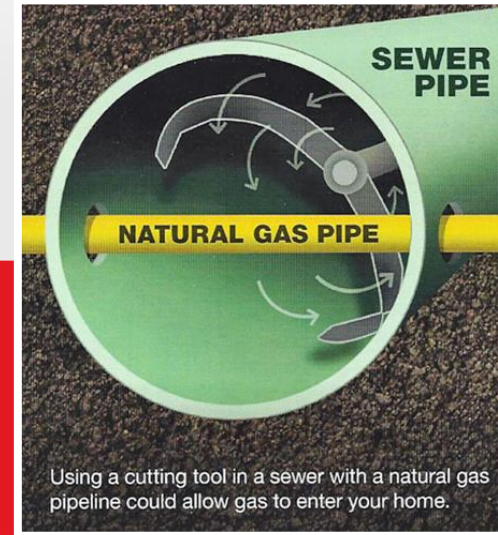
- Cross Bores are seen as our number #1 unmitigated safety risk at SCG
- They can present a significant risk to safety.
- Cross bores can cause a sewage backup into home
- This creates a health and safety risk for the residents
- It can cause an outage to their sewer service
- It increases the risk of resident calling to get sewer rodded out, creating an uncontrolled escape of natural gas



Cross Bore – What to look for/How to respond

Indications of a Gas Leak

-  **LOOK** for blowing dirt, discolored vegetation or bubbling in standing water.
-  **LISTEN** for a hissing or roaring noise near a natural gas appliance or line.
-  **SMELL** for the distinctive, “rotten-egg” odor associated with natural gas.



01.

LEAVE the area immediately and instruct others to move a safe distance away from the potential leak.

02.

AVOID any potential source of ignition, including a cell phone, flashlight or light switch. Wait until you are a safe distance away before using your cell phone.

03.

CALL UTILITY OWNER and 911 from a safe location. Stay away until emergency personnel indicate it is safe to return.



You Can Help Prevent Cross Bore Events



Assume the sewer obstruction may involve a cross bore



Call **811** Before You Clear to have all utility lines in the area located



Assess the blockage using a camera



Clear without a cutting tool (use a plumbing snake or water jet)



Call Atlanta Gas Light if you suspect a cross bore **877.427.4321**

Visit

Sewer Line Safety | Atlanta Gas Light

Office

Type

- Depot
- Office
- Office/Depot

Tiffany Callaway-Ferrell, VP

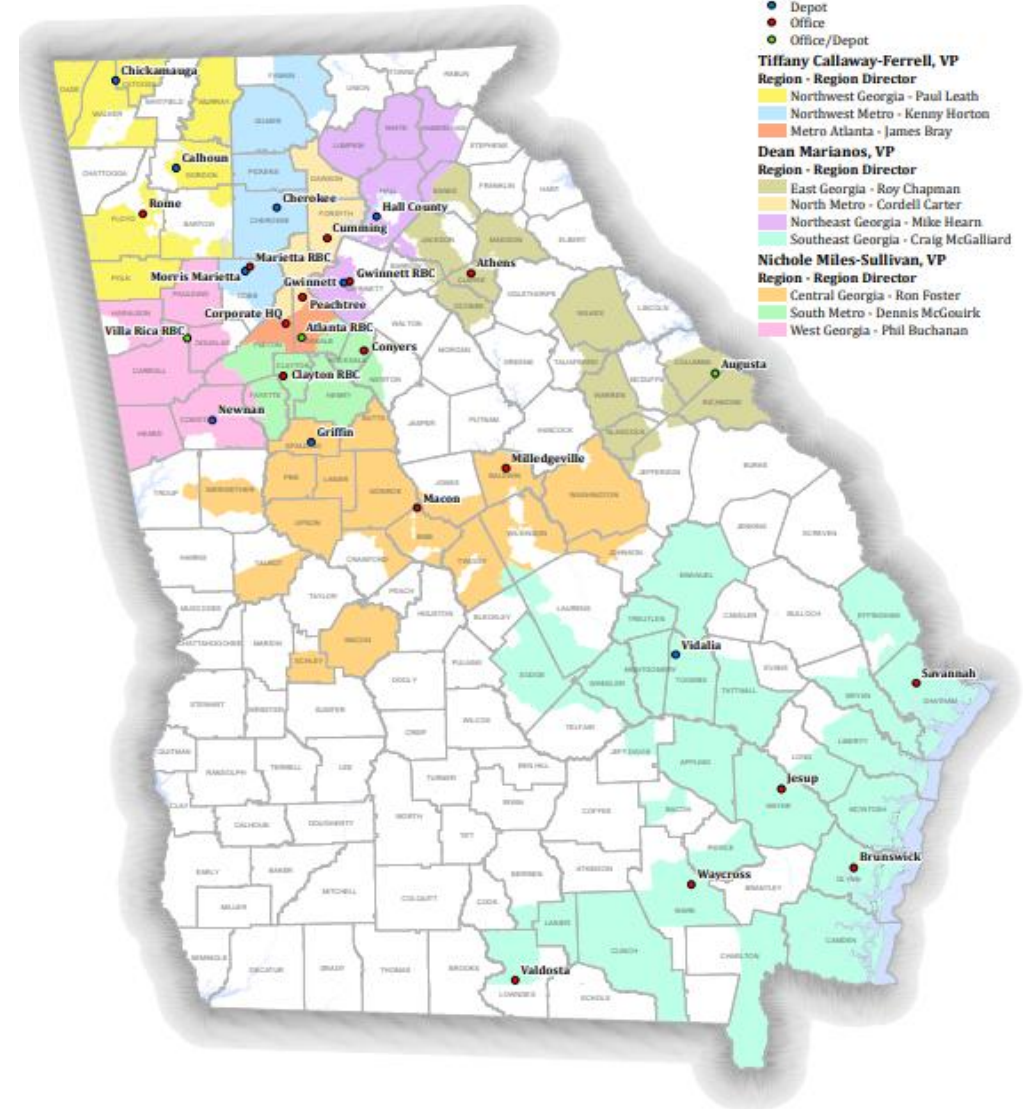
- Region - Region Director
- Northwest Georgia - Paul Leath
 - Northwest Metro - Kenny Horton
 - Metro Atlanta - James Bray

Dean Marianos, VP

- Region - Region Director
- East Georgia - Roy Chapman
 - North Metro - Cordell Carter
 - Northeast Georgia - Mike Hearn
 - Southeast Georgia - Craig McGalliard

Nichole Miles-Sullivan, VP

- Region - Region Director
- Central Georgia - Ron Foster
 - South Metro - Dennis McGouirk
 - West Georgia - Phil Buchanan



Let's keep this.....



.....from turning into this.



Comments? Questions?

